

COKE OVEN

DOOR EXTRACTOR

IKIO IRON WORKS CO.,LTD.
IKIO ENGINEERING CO.,LTD.





COKE OVEN

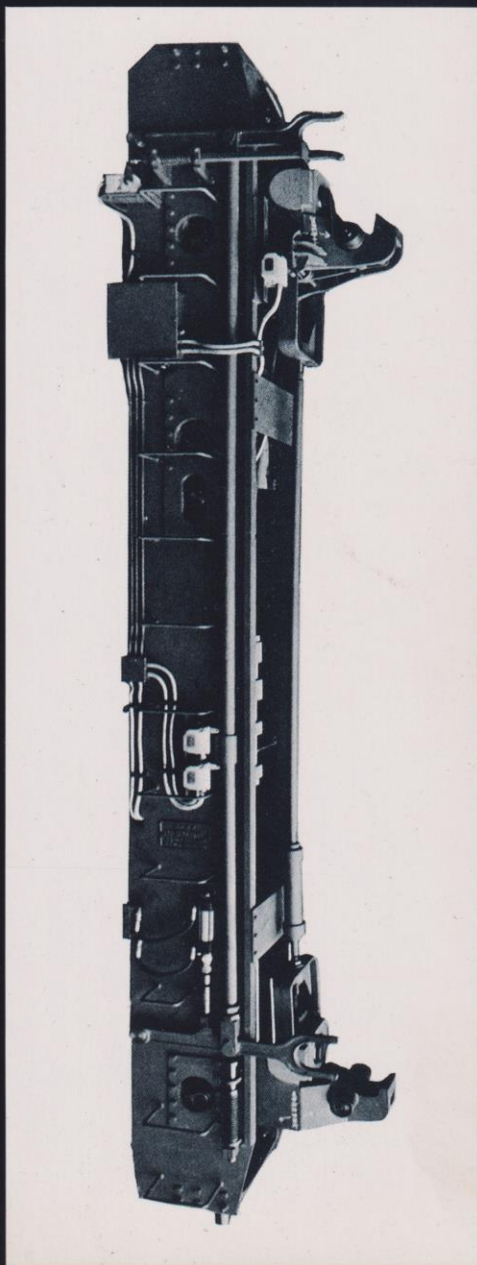
DOOR EXTRACTOR

IKIO's patented door extractors,

This is patented oven door extractor. The first unit was produced and delivered in 1969 and a total of 160 units have been delivered as of August 1987.

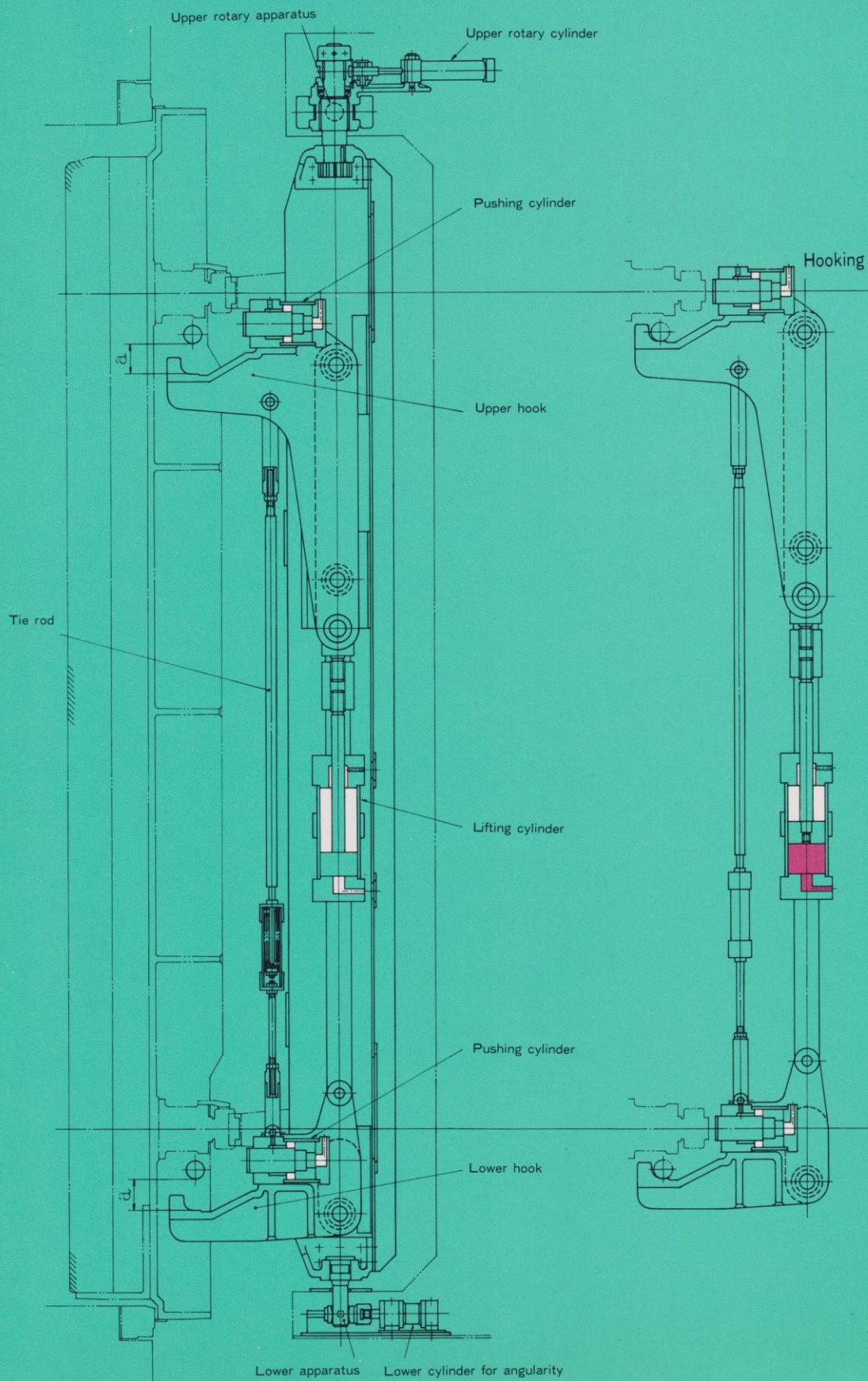
The extractor is remote-controlled by means of oil-pressure and electrical controls.

The extractor has shown the highest performance of all extractors currently in use and enjoys a good reputation internationally as well as domestically.





Steps for attaching and extracting the coke over

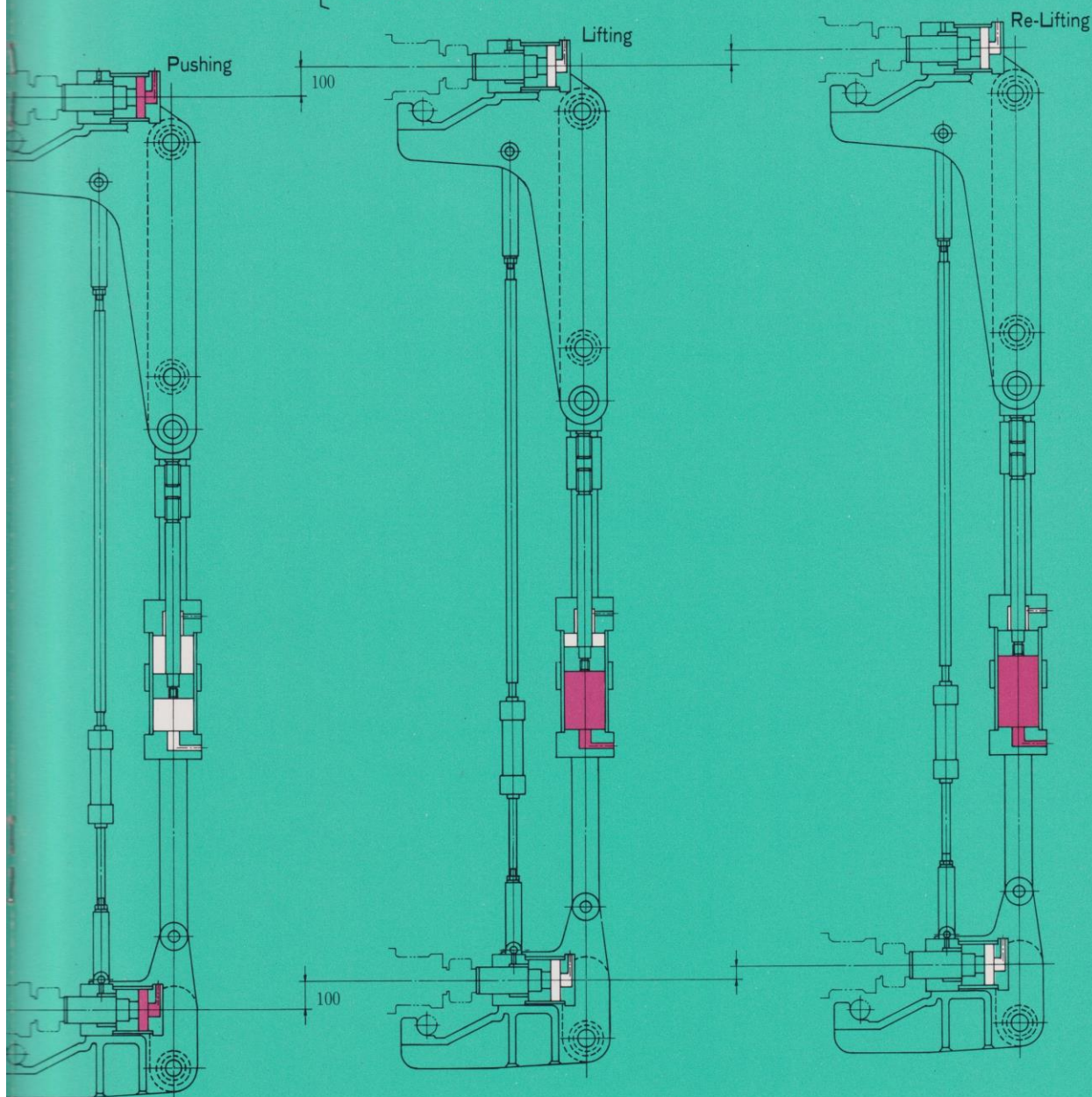


door

IKIO IRON WORKS CO.,LTD.
IKIO ENGINEERING CO.,LTD.

Extracting steps:

Stationary position → Advance (low-high-low) → Forward-terminal stop → Hooking → { Latches loosened
Extractor tilted } Decompression
→ Oven door lifted → Retreat (low-high-low) → Retreat-terminal stop → Slight pivoting → Completion
Extractor erected



Attaching steps:

Slight pivoting to front → Advance (low-high-low) → Forward-terminal stop → Oven door lowered
Extractor tilted
→ { Latches tightened → Unhooking → Retreat (low-high-low) → Retreat-terminal stop (Stationary position)
Decompression } Extractor erected

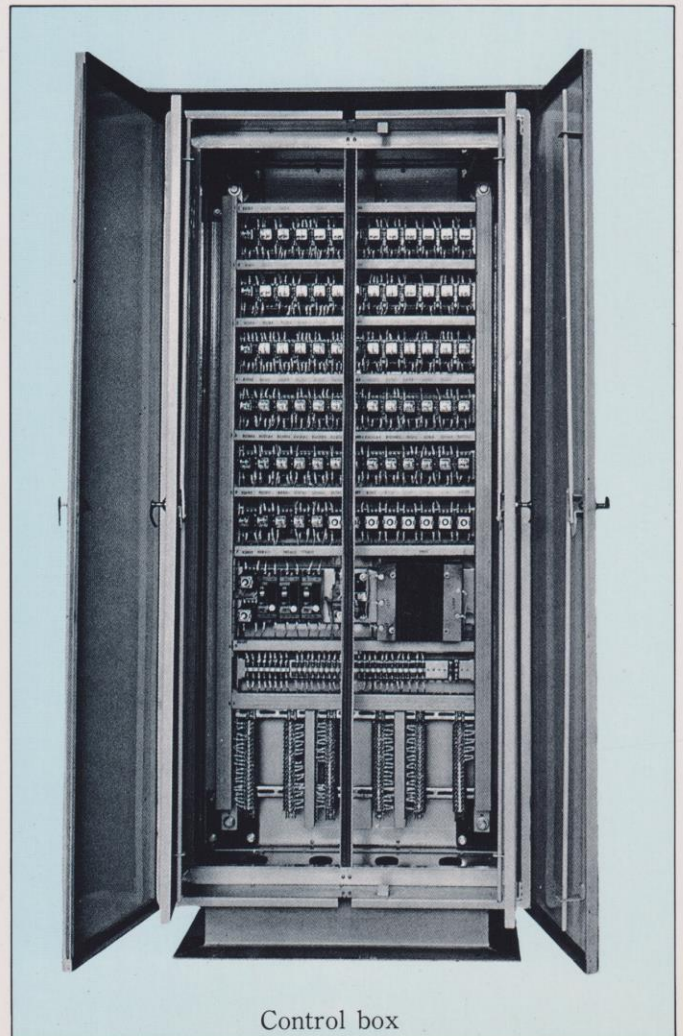


Features:

- 1 The extractor can be controlled completely automatically by electrical control of the oil pressure.
- 2 Each operation is independent, fulfils a specific function, and is performed with speed, accuracy and safety. These factors make for high reliability.
- 3 No link mechanism is employed. Simple construction minimizes breakdowns. Assembly and disassembly time is minimal, and maintenance is simple and easy.
- 4 In case the alignment of the oven doors is uneven, automatic attaching and extracting remain unaffected, because of the sub-cylinder.

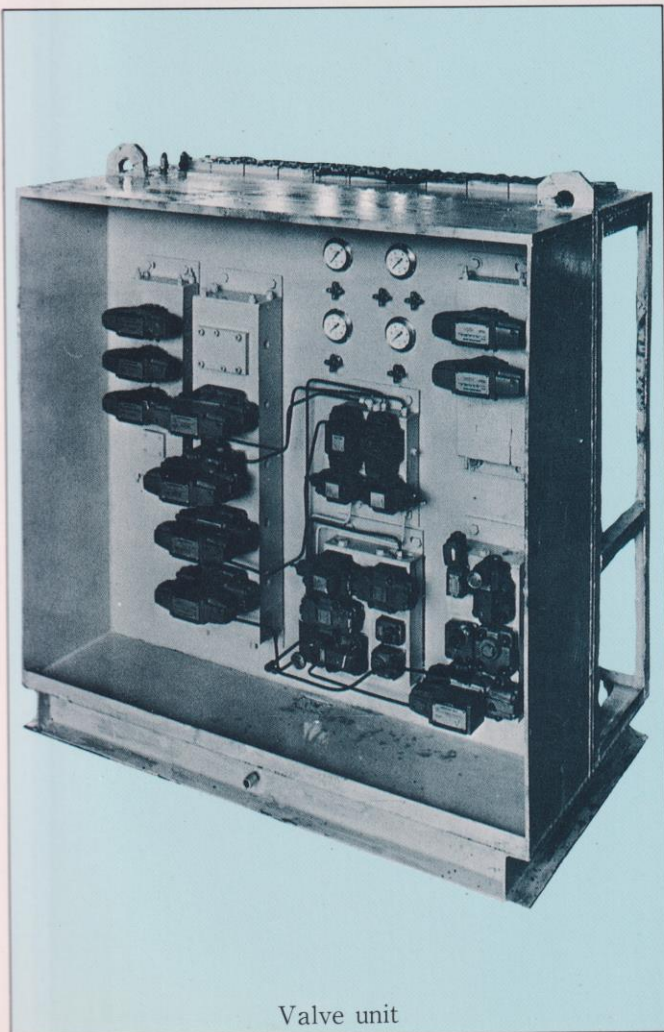


Operation board

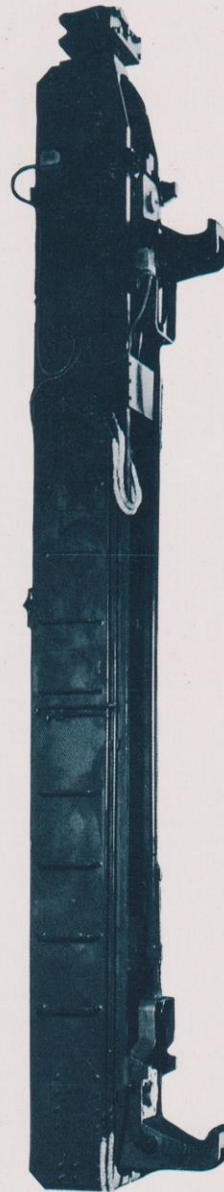


Control box

- 5 The stroke distance of the main cylinder is about 350mm which makes central lubrication easy.
- 6 When the oven door tilts, angular contacts by means of the lower attachment on the extractor are possible: accurate attaching or extracting of the oven door is thus accomplished.
- 7 All of the electrical parts are standard items. Keeping spare parts for each unit on hand will facilitate quick replacement.



Valve unit



Extractor Main Body



IKIO IRON WORKS CO., LTD.

2-1-5, Futajima, Wakamatsu-ku, Kitakyushu, Japan

PHONE(093) 791-4321 TELEX : 712538 IKIO J

FAX(093)791-4326