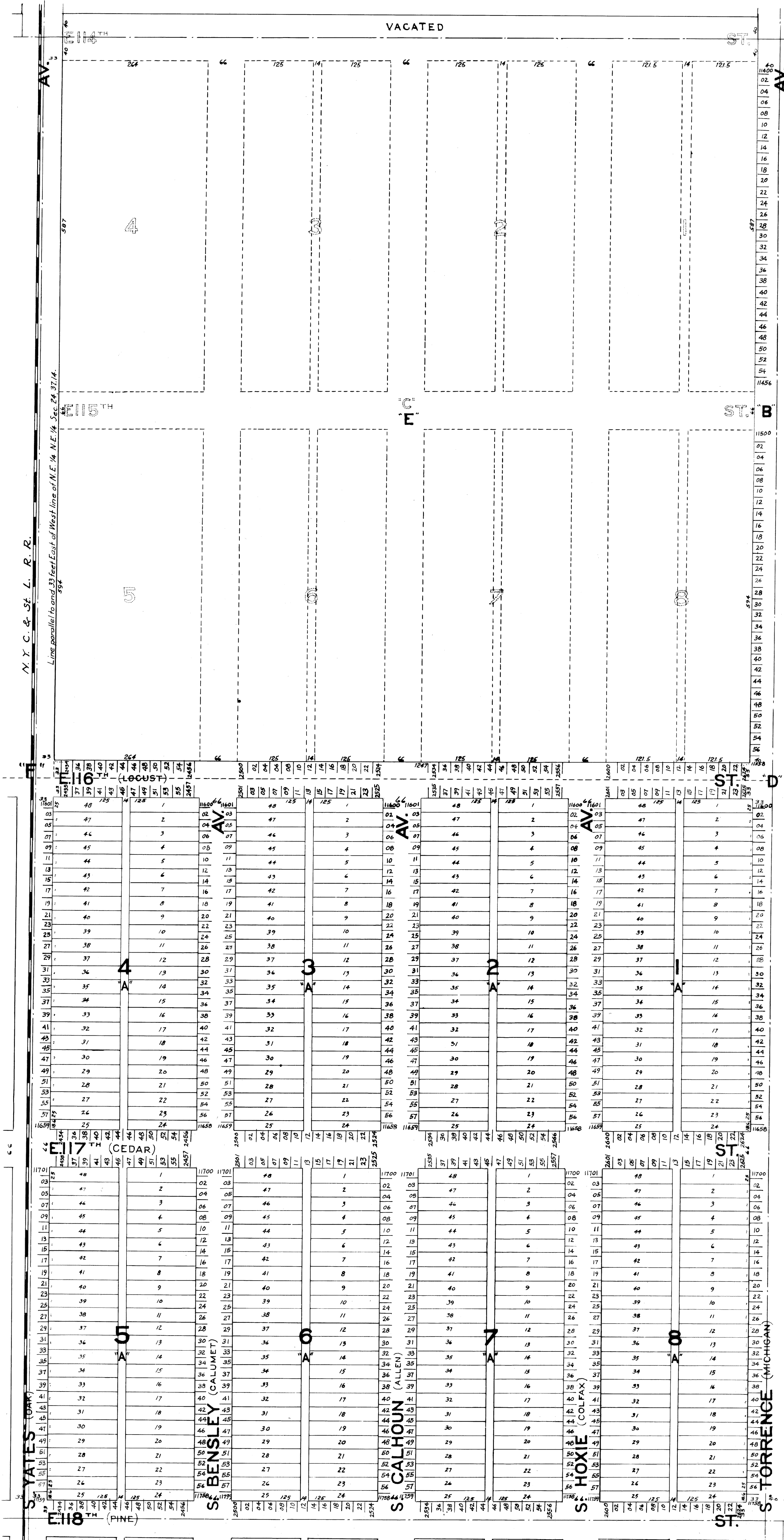


E. 1/2, N.E. 1/4, SEC. 24, 37, 14.



"A"
 Allen's Sub of the S.E. 1/4 of the N.E. 1/4, of
 Sec. 24, 37, 14.
 Rec. Jan. 25, 1869 B.168 P.35 Doc. 196 289

"B"
 Dedication of Torrence Av. through the
 N.E. 1/4 of the N.E. 1/4 of Sec. 24, 37, 14, by
 Joel Reeves.
 Rec. Dec. 8, 1876. Book 12 P.35 Doc. 113851

"C"
 Maher & Trego's Add. to Irondale a Sub. of
 N.E. 1/4, N.E. 1/4, Sec. 24, T. 37 N., R. 14 E. 3rd P.M.
 (except the W. 33 ft. thereof)
 Rec. Sep. 8, 1887, B.25 P.42 Doc. 869 489
 Vacated by Instrument of Vacation dated
 July 16, 1919. Approved by City Council June
 29, 1920. See "E".

"D"
 Ordinance for the Vacation of Muskegon
 Av. from 115th St. to 120th St. and Chittenden
 Rd. from 120th St. to 130th St.
 Showing also Torrence Av. as Opened from
 115th St. to 130th St., and 130th St. as Opened
 from Torrence Av. to Carondole 1 Av. All in ac-
 cordance with the terms of an Ordinance
 passed by the City Council of the City of
 Chicago July 11, 1904.
 Rec. Dec. 31, 1910 Doc. Nos. 4686057 & 4686058

"E"
 Ordinance Vacating all Streets and Alleys
 in Maher & Trego's Add., also the N. 40 ft. of
 114th St. from Torrence Av. to Yates Av.
 Passed June 29, 1920.
 Rec. Aug. 12, 1920 Doc. 6 911 408

"F"
 Alignment of the Chicago and State
 Line R. R. thru Cook County, Ill.
 Rec. Dec. 14, 1868 Doc. No. 1040025.